

Lincoln Public Schools  
Lincoln, Massachusetts

THE LINCOLN SCHOOL COMMITTEE MEETING OF  
WEDNESDAY, APRIL 9, 2025  
TRI-DISTRICT MEETING

Joint Meeting between the Lincoln-Sudbury School Committee, Sudbury School Committee  
and Lincoln School Committee

Hartwell Multipurpose Room, Lincoln School  
6 Ballfield Road, Lincoln, MA 01773

7:00 p.m. – Open Session – Hybrid Meeting

Pursuant to the extension of the remote meeting authorization of the Open Meeting Law through June 30, 2027 under Chapter 2 of the Acts of 2025, this meeting of the Lincoln School Committee will be conducted as a hybrid meeting, providing the public the opportunity to participate in-person or remotely.

Specific information and the general guidelines for remote participation by members of the public and/or parties with a right and/or requirement to attend this meeting can be found on the Town of Lincoln website, at [www.lincolntown.org](http://www.lincolntown.org).

When: Apr 9, 2025 07:00 PM Eastern Time (US and Canada)  
Topic: School Committee Tri-District Meeting

Join from PC, Mac, iPad, or Android:  
<https://us06web.zoom.us/j/89386556773>

Phone one-tap:  
+16469313860,,89386556773# US  
+13017158592,,89386556773# US (Washington DC)

Join via audio:  
+1 646 931 3860 US, +1 301 715 8592 US (Washington DC), +1 305 224 1968 US, +1 309 205 3325 US  
+1 312 626 6799 US (Chicago), +1 646 558 8656 US (New York), +1 360 209 5623 US, +1 386 347 5053 US  
+1 507 473 4847 US, +1 564 217 2000 US, +1 669 444 9171 US, +1 689 278 1000 US, +1 719 359 4580 US  
+1 720 707 2699 US (Denver), +1 253 205 0468 US, +1 253 215 8782 US (Tacoma),  
+1 346 248 7799 US (Houston)  
Webinar ID: 893 8655 6773

International numbers available: <https://us06web.zoom.us/j/89386556773>

- |    |   |           |
|----|---|-----------|
| 1. | Greetings and Call to Order   | 7:00 p.m. |
| 2. | Framing the Purpose of the Tri-District Meeting   | 7:05 p.m. |
| 3. | Public Comment  | 7:10 p.m. |
| 4. | Presentation of relevant data and information on school district calendars from Sudbury, Lincoln and LS Administrations | 7:15 p.m. |
| 5. | Discussion on aligning School Committee timelines for approval of future school district calendars                      | 8:00 p.m. |

*The listing of matters are those reasonably anticipated by the Chair which may be discussed at the meeting. Not all items listed may in fact be discussed and other items not listed may also be brought up for discussion to the extent permitted by law.*

6. Discussion on a process to review district calendars 8:15 p.m.
  - Potential criteria for school district holidays
  - Potential guidelines for a Subcommittee process to review pertinent information and create recommendations for the full committees
7. Action Items 9:25 p.m.
  - Potential vote to appoint members to a Tri-District Calendar Review Subcommittee
  - Potential vote on a charge for a Tri-District Calendar Review Subcommittee
8. Adjournment 9:30 p.m.

Lincoln Public Schools  
Lincoln, Massachusetts

SCHOOL COMMITTEE TRI-DISTRICT MEETING OF APRIL 9, 2025

RECOMMENDED ACTION:

No action required.

---

ITEM NO. 1: Greetings and Call to Order

ITEM NO. 2: Framing the Purpose of the Tri-district Meeting

ITEM NO. 3: Public Comment

Lincoln Public Schools  
Lincoln, Massachusetts

SCHOOL COMMITTEE TRI-DISTRICT MEETING OF APRIL 9, 2025

AGENDA ITEM:

4.0 Presentation of relevant data and information on the school district  
calendars from Sudbury, Lincoln, and LS Administrations

Supporting Documents: ☒ Enclosed ☐ N/A ☐ Forthcoming

RECOMMENDED ACTION:

☐

Information Only

☒

Discussion/Review

☐

First Reading

☐

Second Reading

☐

VOTE to:

---

**BACKGROUND:**

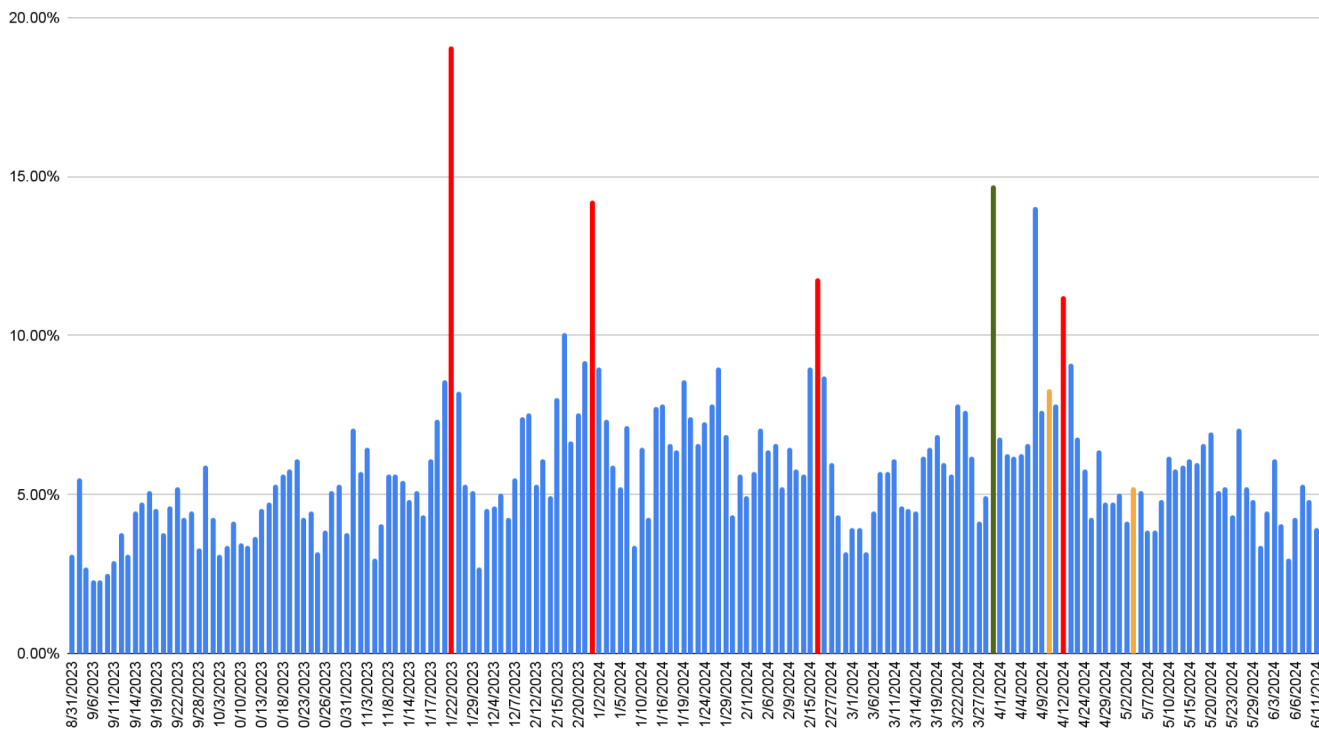
1. SC members have received requests from families to add holidays to the calendar.
2. The Lincoln School Committee, Sudbury School Committee and Lincoln Sudbury Regional High School Subcommittee will discuss attendance data for students and staff on selected holidays, as well as the calendars of surrounding districts.

## Lincoln Public Schools Absence Rates on Select Days of Observance

The following data investigates absence rates on five days of observance (Diwali, Lunar New Year, Eid al-Fitr, Good Friday, and Orthodox Good Friday) when school is typically in session. The Lincoln Public Schools are not in session for several other major days of observance, including Rosh Hashanah, Yom Kippur, and Christmas. We looked at the three prior school years, 2021-2022, 2022-2023, and 2023-2024, as well as this school year through the end of March.

The average daily absence rate for students during this period was 6.15%, with typically higher rates in the winter. Consistently the days before school breaks have the highest absence rates of the year. For example, in the 23-24 chart below, four of the six highest spikes (in red) reflect the days before November Break (19.07%), December Break (14.23%), February Break (11.81%), and April Break (11.23%).

Daily Student Absence Rate, School Year 2023-2024



Among the days of observance we focused on, Good Friday (in green), stands out with an absence rate of 14.71%. The other days of observance falling on school days (in yellow) did not differ significantly from a typical day. (*Diwali and Lunar New Year were not observed on school days in 23-24.*)

Across multiple years, we see a similar pattern with a consistently high absence rate on Good Friday. Similar charts for other years are included at the end of this document.

**Lincoln Public Schools**  
**Absence Rates on Select Days of Observance**

Our faculty absence rates are more stable than the students, with fewer “spikes”. The average absence rate for faculty across the years we looked at was 12.91%, with most days falling into a range of 8-17%. We do not see similar spikes before school breaks. This may in part be attributable to contractual language preventing the use of personal days before a school holiday without prior approval from the Superintendent.

On the days of observance we looked at we do not see any clear pattern of significantly higher absence rates for faculty on those days. In fact, on many of these days, we see lower absence rates than is typical. Eid al-Fitr is the only one of the days that has a consistently above average absence rate, but only by a modest amount.

**Faculty Absence Rates on Select Days of Observance**

	<b>SY 2021-2022</b>	<b>SY 2022-2023</b>	<b>SY 2023-2024</b>	<b>SY 2024-2025*</b>
Diwali	11.95%	18.06%	<i>Not a School Day</i>	9.80%
Lunar New Year	11.32%	<i>Not a School Day</i>	<i>Not a School Day</i>	9.15%
Good Friday	8.18%	5.16%	5.81%	-
Orthodox Good Friday	<i>Not a School Day</i>	5.16%	9.68%	-
Eid al-Fitr	17.61%	<i>Not a School Day</i>	13.55%	16.99%
<i>Average Absence Rate</i>	<i>12.44%</i>	<i>14.26%</i>	<i>12.83%</i>	<i>11.86%</i>

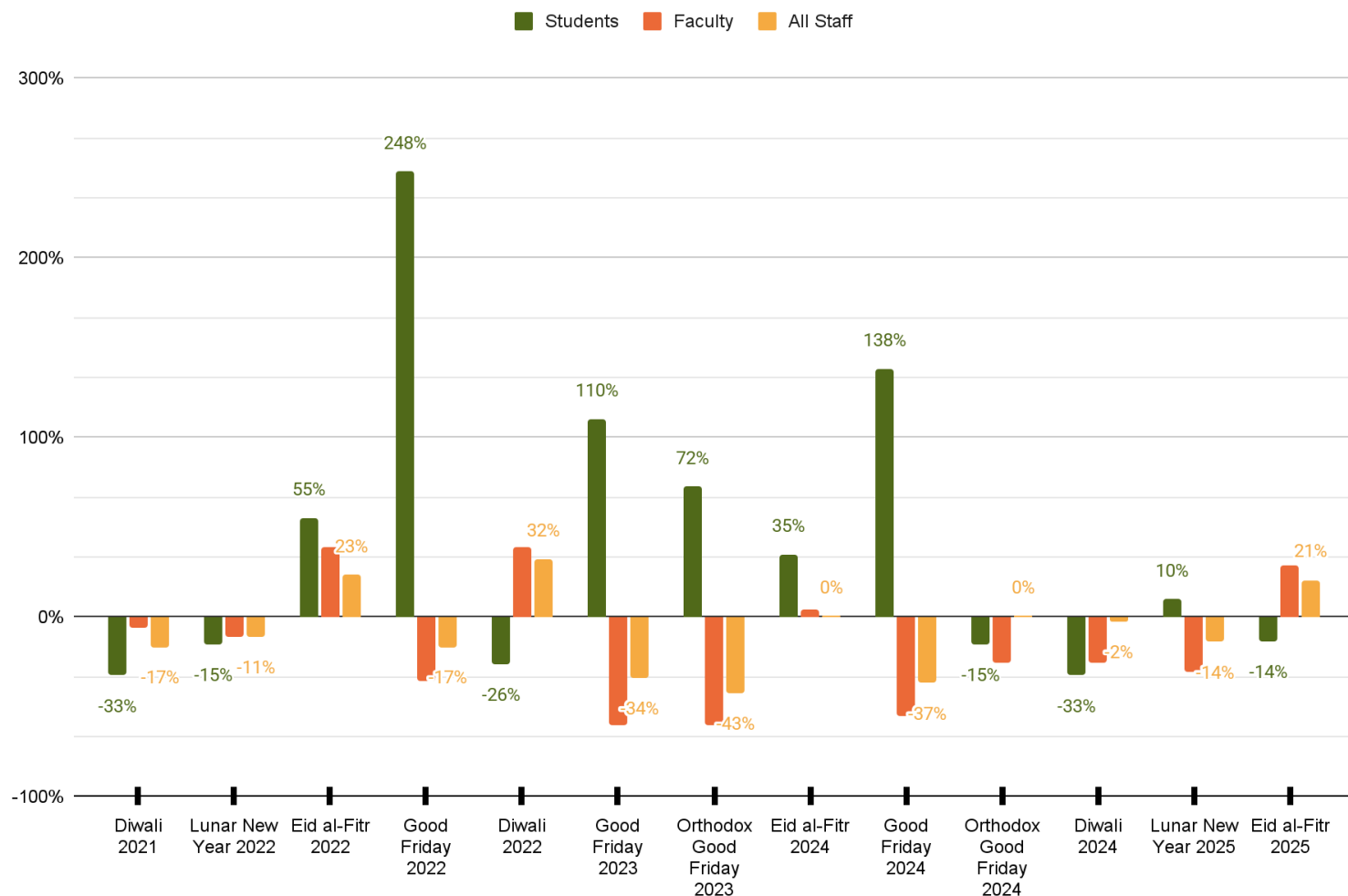
\* Through March 31, 2025

## Lincoln Public Schools

### Absence Rates on Select Days of Observance

The next chart brings staff and students together and looks at the % difference from the average daily absence rate on the days of observance. A 0% difference indicates an average absence rate for that day. Positive values mean a higher absence rate for that day, and negative values mean an absence rate below the average. Here we again see that Good Friday stands out with more than double the typical absence rate for students over the past three years, while no clear pattern stands out for staff or for the other days of observance.

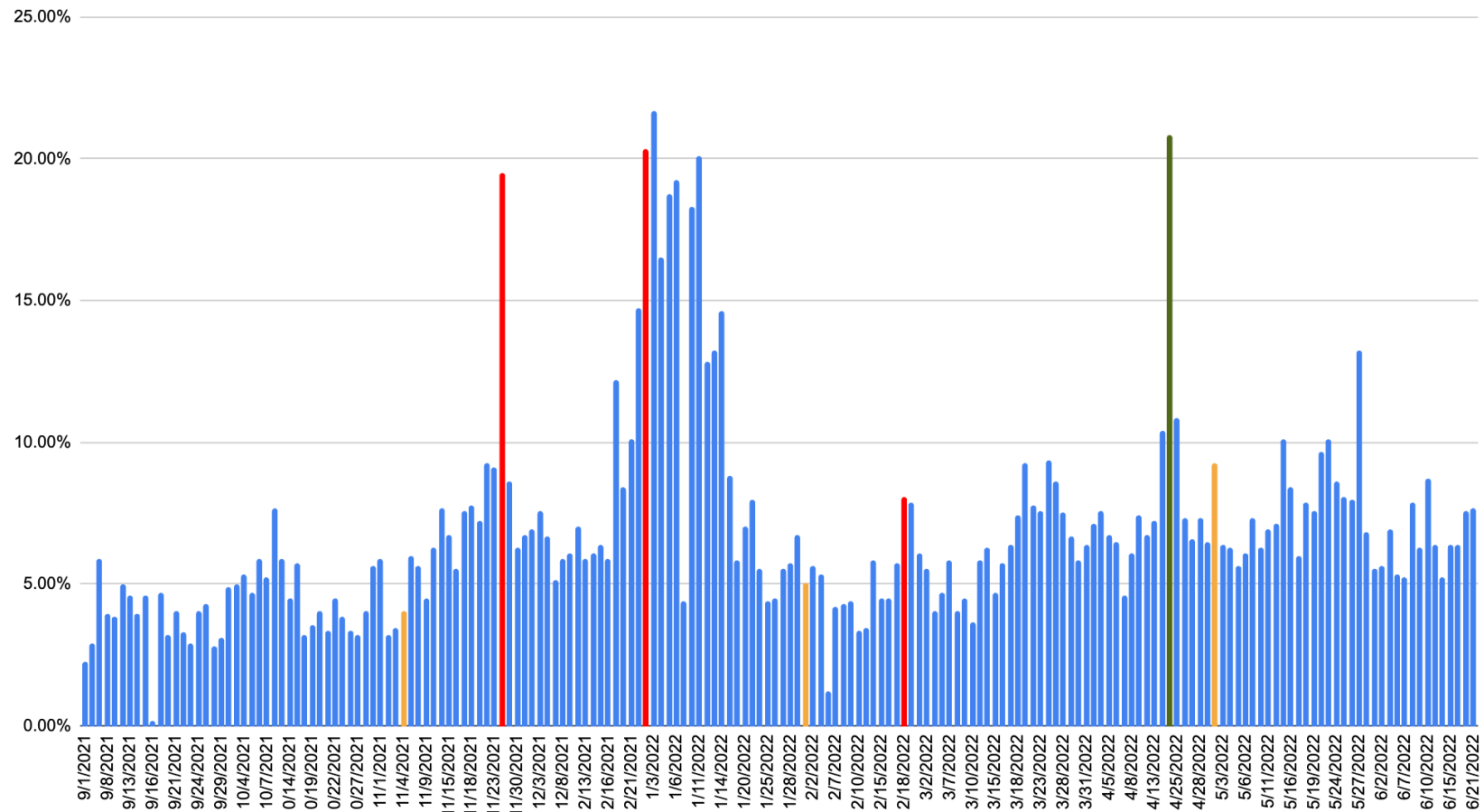
% Difference from Average Absence Rates for Students, Faculty, and All Staff on Select Holidays



# Lincoln Public Schools Absence Rates on Select Days of Observance

## Additional Charts

Daily Student Absence Rate, School Year 2021-2022

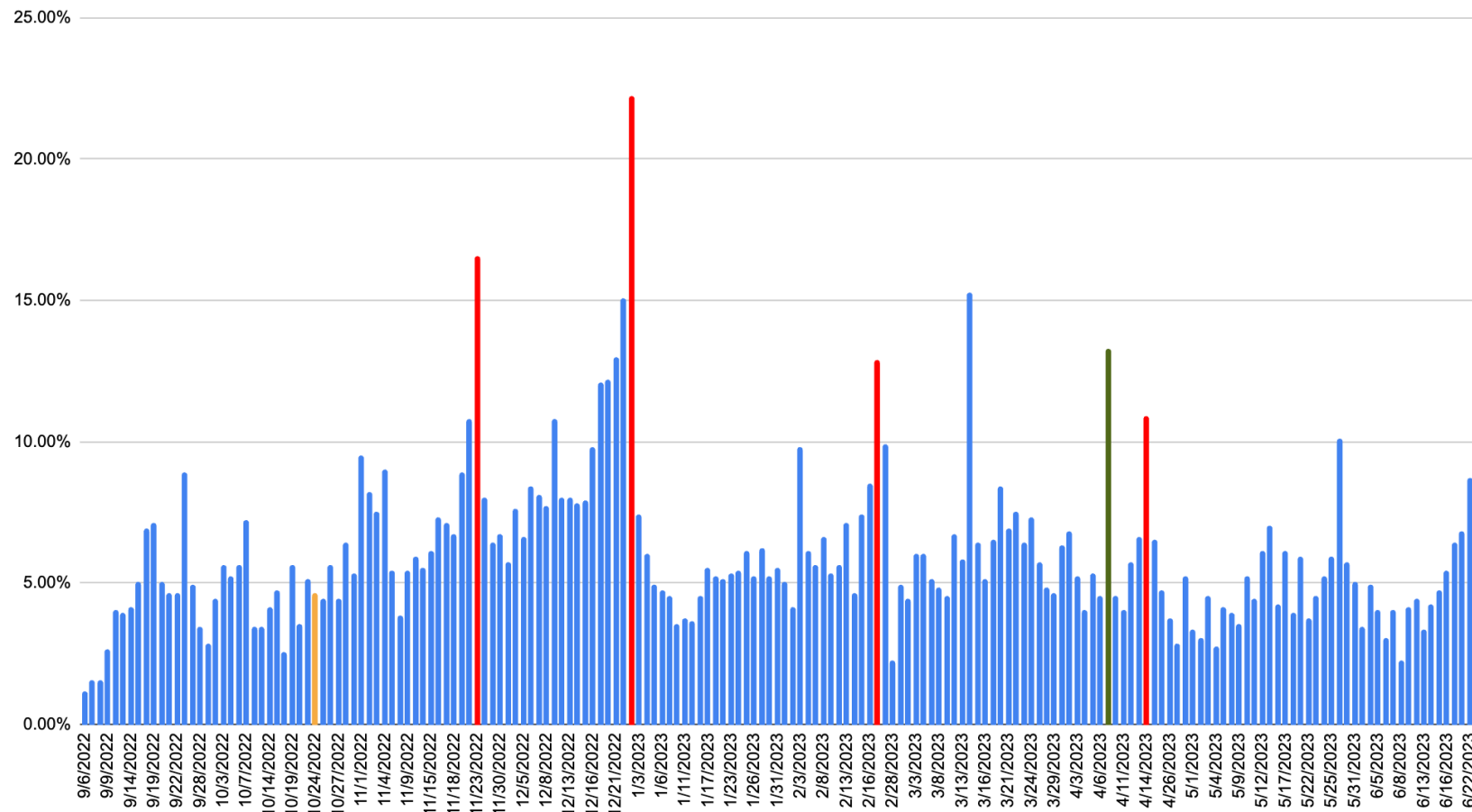


*Note: 4/15/22 (in green) is both Good Friday and the day before April Break; Orthodox Good Friday was not observed on a school day in 21-22.*

# Lincoln Public Schools

## Absence Rates on Select Days of Observance

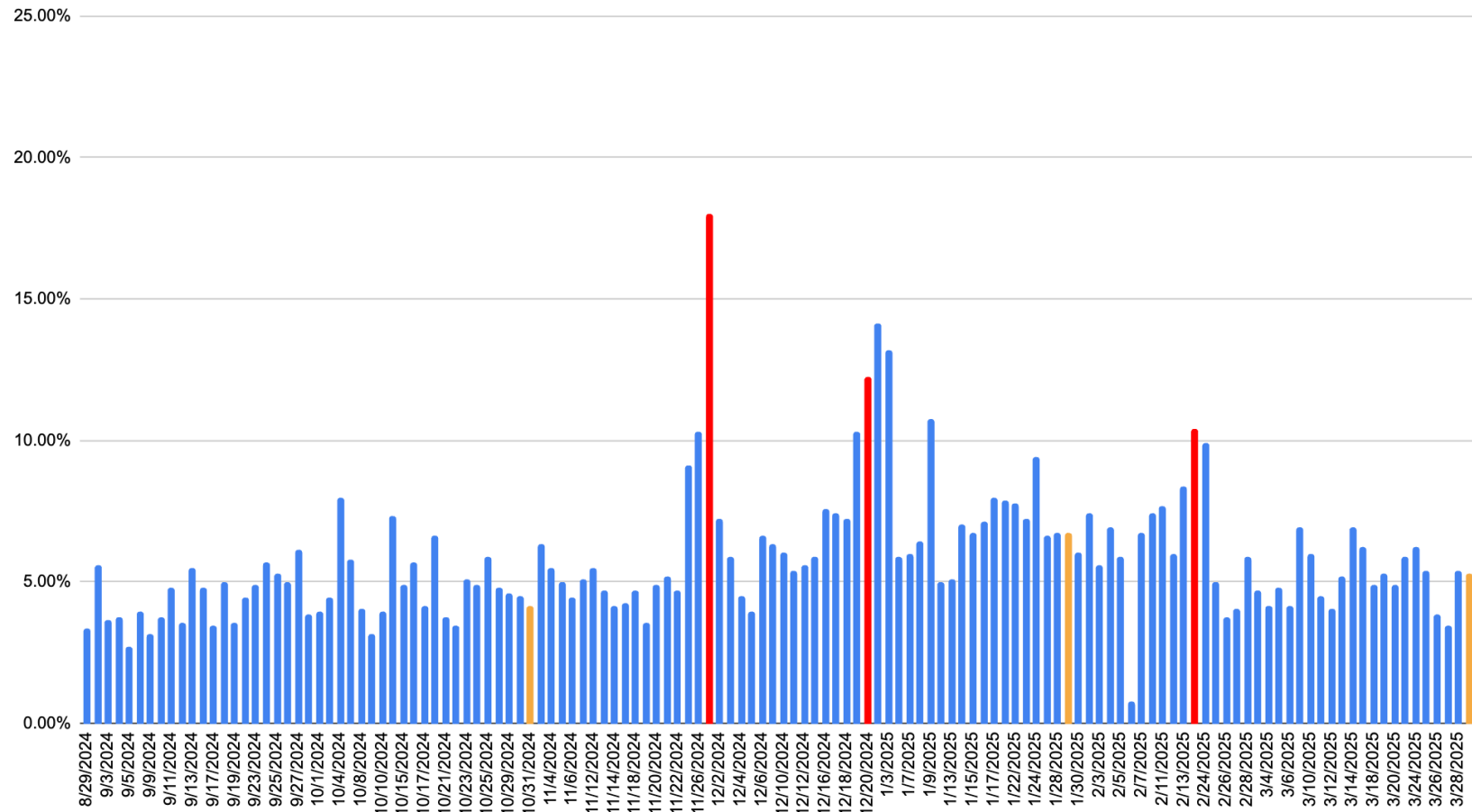
Daily Student Absence Rate, School Year 2022-2023



Note: 4/14/23 (in red) is both Orthodox Good Friday and the day before April Break; Lunar New Year and Eid al-Fitr were not observed on school days in 22-23.

## Lincoln Public Schools Absence Rates on Select Days of Observance

Daily Student Absence Rate, School Year 2024-2025 (through 3/31/25)



**Lincoln Public Schools**  
**Absence Rates on Select Days of Observance**

**Days of Observance Reviewed**

	<b>SY25</b>	<b>SY24</b>	<b>SY23</b>	<b>SY22</b>
Diwali	10/31/2024	11/12/2023	10/24/2022	11/4/2021
Lunar New Year	1/29/2025	2/10/2024	1/22/2023	2/1/2022
Eid al-Fitr	3/31/2025	4/10/2024	4/21/2023	5/2/2022
Good Friday	4/18/2025	3/29/2024	4/7/2023	4/15/2022
Orthodox Good Friday	4/18/2025	5/3/2024	4/14/23	4/22/22

L-S School Calendar Attendance Data

Year	Students (as of Oct. 1 each year)	Average Student Attendance	Average Staff attendance
2024-2025	1445	96%	93.8%
2023-2024	1462	95.8%	94%
2022-2023	1484	95.1%	94.5%

Religiously Significant Day/Date	Date	Absences - Students	Absences - Staff
Lunar New Year	1/29/25	76	11
Eid al-Fitr	3/30/25 (Sunday)	0	0
Diwali	10/31/24/11/1/24	41/55	10/22
Lunar New Year	2/10/24 (Saturday)	0	0
Eid al-Fitr	4/10/24	72	21 (1)
Diwali	11/12/23 (Sunday)	0	0
Lunar New Year	1/22/23 (Sunday)	0	0
Eid al-Fitr	4/21/23 (Vacation)	0	0
Diwali	10/24/22	66	19 (1)
Lunar New Year	2/1/22	48	6
Eid al-Fitr	5/2/22	86	13
() = staff absences identified as religious observance code for reason			

# SPS Holiday Absences

Holiday	School Year	Day of the Week	Date	Students	Staff	Note
Chinese New Year	2021-2022	Tuesday	02/01/2022	91	44	
Eid al-Fitr	2021-2022	Tuesday	05/03/2022	134	42	
Eid al-Adha	2022-2023	Saturday	07/09/2022	weekend	weekend	
Diwali	2022-2023	Monday	10/24/2022	116	45	
Chinese New Year	2022-2023	Sunday	01/22/2023	weekend	weekend	
Eid al-Fitr	2022-2023	Saturday	04/22/2023	weekend	weekend	
Eid al-Adha	2022-2023	Wednesday	06/28/2023	summer	16*	
Diwali	2023-2024	Sunday	11/12/2023	weekend	weekend	
Chinese New Year	2023-2024	Saturday	02/10/2024	weekend	weekend	
Eid al-Fitr	2023-2024	Wednesday	04/10/2024	129	47	
Eid al-Adha	2023-2024	Monday	06/07/2024	78	61	
Diwali	2024-2025	Thursday	10/31/2024	59	45	
Chinese New Year	2024-2025	Wednesday	01/29/2025	pd day	52	
Eid al-Fitr	2024-2025	Sunday	03/30/2025	weekend	weekend	
Eid al-Adha	2024-2025	Saturday	06/07/2025	weekend	weekend	
<b>Absences on an "average" day</b>				<b>120</b>	<b>46</b>	



## SCHOOL DISTRICT CALENDAR COMPARISON SHEET

District	Federal and State Observance	Start Date 2024	Last Day (no snow days)	Good Friday	Yom Kippur	Rosh Hashanah	Lunar New Year	Diwali	Eid al Fitr	Eid al-Adha
Belmont	X	9/4/24	6/17/25							
CC/CPS	X	8/28/24	6/13/25							
Carlisle	X	8/28/24	6/13/25							
Hingham	X	9/2/24	6/15/25	X						
Weston	X	8/28/24	6/20/25	X	X	X				
Dover-Sherborn	X	8/28/24	6/16/25	X	X	X				
Wayland	X	9/3/24	6/18/25		X	X	X			
Newton	X	9/3/24	6/20/25	X	X	X	X			
Lexington	X	8/27/24	6/18/25	X*	X	X	X	X	X	
Wellesley	X	8/28/24	6/20/25	X	X	X	X	X	X	
Bedford	X	9/3/24	6/17/25							
Westford	X	8/28	6/18/25				X	X	X	
Brookline	X	9/3/24	6/20/25	X	X	X	X			
Boston Public Schools	X	9/5/24	6/23/25							
Lincoln-Sudbury	X	8/28/24	6//16/25	X	X	X				
Sudbury Public Schools	X	6/28/24	6/16/25	X	X	X				
Lincoln Public Schools	X	6/29/24	6/13/24	X*	X	X				
*Half Day										

Lincoln Public Schools  
Lincoln, Massachusetts

SCHOOL COMMITTEE TRI-DISTRICT MEETING OF APRIL 9, 2025

AGENDA ITEM:

5.0 Discussion on aligning School Committee timelines for approval of future school district calendars

Supporting Documents: ☐ Enclosed ☒ N/A ☐ Forthcoming

RECOMMENDED ACTION:

☐

Information Only

☒

Discussion/Review

☐

First Reading

☐

Second Reading

☐

VOTE to:

---

**BACKGROUND:**

Members of the Lincoln, Sudbury and Lincoln-Sudbury School Committees will discuss aligning timelines for approval of future district school calendars.

Lincoln Public Schools  
Lincoln, Massachusetts

SCHOOL COMMITTEE TRI-DISTRICT MEETING OF APRIL 9, 2025

AGENDA ITEM:

6.0 Discussion on a process to review district calendars:

- Potential criteria for school district holidays
- Potential guidelines for a subcommittee process to review pertinent information and create recommendations for the full committee

Supporting Documents: ☒ Enclosed ☐ N/A ☐ Forthcoming

RECOMMENDED ACTION:

☐ Information Only ☒ Discussion/Review  
☐ First Reading ☐ Second Reading

☐ VOTE to:

---

BACKGROUND:

1. Current policies on holidays and cultural observances are included for the three districts present.
2. Policies and updates from other school districts are included for discussion.
3. SC members will discuss potential to create a subcommittee to examine issue more thoroughly.



**The Public Schools of Brookline**  
Brookline Town Hall  
333 Washington Street, 5<sup>th</sup> Floor  
Brookline, Massachusetts 02445  
617.730.2401

**Linus J. Guillory Jr., PhD**  
Superintendent

September 2024

Dear Families,

I am pleased to be able to share the annual list of religious and cultural observances. For those of you who are returning parents and guardians, this letter and list will be familiar. For those families who are new to the school district, please take a moment to familiarize yourself with the information below to understand the purpose and intent behind this annual message.

The students in the Public Schools of Brookline represent a diverse community of learners. Celebrating this diversity is one of the key characteristics of our district. PSB's core value of "Respect for Human Differences" calls on us to honor Brookline's diversity and value the varied perspectives and experiences that enrich each of our schools.

The assignment of homework over religious/cultural holidays is an issue often raised by parents and students. Following is a set of procedures that guide the practice of assigning homework, as aligned with the School Committee's Homework Policy. By following these procedures, we demonstrate our commitment to providing students with the opportunity to more fully observe religious and cultural holidays and celebrations.

The list of specific holidays and dates for the 2024-2025 school year is attached.

**Category 1:**

*What this means:* Absences by staff and students impact the ability to conduct classes on this date or during this time. Designated as "days of low attendance", certain category 1 holidays are often embedded within school vacations.

*Instructions:* No homework will be assigned in any class for all students on the last day of school before a category 1 holiday. Homework assignments, projects, presentations, or other assignments cannot be due until at least the second school day after the holiday, even in the case of a longer school vacation. The same policy applies for the administration of tests.

**Category 2:**

*What this means:* School remains in session because these holidays are not considered to be a "day of low attendance". However, they are still celebrated by a significant portion of our school population.

*Instructions:* No homework will be assigned in any class for all students on the last day of school before the category 2 holiday. Homework assignments, projects, presentations, or other assignments cannot be due until at least the second school day after the holiday, even in the case of a longer school vacation. The same policy applies for the administration of tests.

**Category 3:**

*What this means:* School remains in session because these holidays impact a smaller number of our students than in the prior two categories.

*Instructions:* Students who are unable to complete a homework assignment due to this type of holiday should inform their teacher, who will arrange with the student an alternative time for completion of work, without loss of credit. The attached list includes the most common category 3 dates, but it is not inclusive of all possible dates.

**Thanksgiving Break**

In addition to the religious/cultural celebrations outlined above, no homework will be assigned over the Thanksgiving break. Projects, presentations, or other assignments will not be due until at least the second day following the Thanksgiving break. The same policy applies for the administration of tests.

In all of the situations described above, teachers are asked to comply with both the "letter" and the "spirit" of this guidance. For example, please do not "double up" on homework assigned before a holiday.

**Athletics**

Our athletic programs are another important aspect of a student's educational experience. Regardless of the category, coaches are advised of and sensitive to the religious and cultural needs of their student-athletes and families. There will be no athletic consequence for missing games and/or practices due to religious observances. Moreover, Brookline High School does not schedule league or non-league contests on any of the category 1 dates. Non-mandatory practices may occur on category 1 dates with prior approval by the Athletic Director.

Providing students with the opportunity to fully observe these religious and cultural holidays is a tangible way to demonstrate our commitment to diversity in Brookline.

Thank you for your attention to this important matter.

Sincerely,

A handwritten signature in black ink, appearing to read "Linus J. Guillory Jr.", written in a cursive style.

Linus J. Guillory Jr., PhD  
Superintendent

The Public Schools of Brookline  
Religious and Cultural Observances  
2024-2025

**Category 1**

Rosh Hashanah (Day 1)	Thursday, October 3, 2024
Yom Kippur	Saturday, October 12, 2024
Christmas	Wednesday, December 25, 2024
Lunar New Year	Wednesday, January 29, 2025
Good Friday	Friday, April 18, 2025
Easter	Sunday, April 20, 2025

**Category 2**

Eid al Fitr	Monday, March 31, 2025*
Passover (Day 1)	Sunday, April 13, 2025
Eid al-Adha	Saturday, June 7, 2025*
Diwali	Friday, November 1, 2024

**Category 3\*\***

Rosh Hashanah (Day 2)	Friday, October 4, 2024
Sukkot (2 Days)	Thursday, October 17, 2024
	Friday, October 18, 2024
Winter Solstice	Saturday, December 21, 2024
Hanukkah	Thursday, December 26, 2024
Kwanzaa	Thursday, December 26, 2024
Nowruz	Friday, March 21, 2025
Passover (other dates)	Monday, April 14, 2025
	Saturday, April 19, 2025
	Sunday, April 20, 2025
Good Friday (Eastern Orthodox)	Friday, April 18, 2025
Easter (Eastern Orthodox)	Sunday, April 20, 2025
Shavuot	Monday, June 2, 2025

**Thanksgiving Break**

Thursday & Friday, November 28-29, 2024

*\*Tentative. Holidays on the Islamic calendar are confirmed only after a lunar sighting. Therefore, this date is subject to change following actual astronomical observations closer to the actual holiday.*

*\*\*This list is not inclusive of all possible category 3 dates.*

## Sudbury Public School Committee - DRAFT

### Calendar Subcommittee

#### Mission Statement:

The Calendar Subcommittee will review, update, and recommend to the full School Committee regarding School "No School" days related to religious and cultural holidays.

#### Committee. Members:

---

---

Brad Crozier, Superintendent

#### Goals and Objectives: (process)

The School Committee hereby establishes the School Calendar Review Subcommittee to examine the inclusion of religious and cultural holidays in the Sudbury Public Schools academic calendar. The subcommittee is charged with the following:

1. Review the current list of school-recognized religious and cultural holidays resulting in "No School" days.
2. Review the absentee data for students and staff on any proposed additional "No School" days.
3. Review calendars regarding holiday recognition from comparable districts.
4. Recommend any potential Policy changes and whether to continue recognizing the current holidays and/or to add other holidays as "No School" days.

#### Reporting Requirements (Deadlines, Including to whom, when (dates):

The Subcommittee will present a summary of findings and any recommendations to the full School Committee by September 22, 2025.

The Calendar Subcommittee will inform the Chair after each meeting to coordinate a future meeting date to update the full School Committee on the Subcommittee's recommendations.

#### Compliance with Open Meeting Law (OML):

The Calendar Subcommittee will submit agenda's to the Sudbury Public School Administration for posting in compliance with Massachusetts Open Meeting Law (OML). Meetings and meeting minutes will adhere to Massachusetts OML. Upon approval of meeting minutes, submission to the Sudbury Public School Administration is required to properly post on the Sudbury Public Schools website.



# Lincoln Public Schools

BALLFIELD ROAD  
LINCOLN, MA 01773

---

## **POLICY IMDB ACCOMMODATIONS FOR RELIGIOUS AND CULTURAL OBSERVANCES**

A student may not be penalized for his/her observance of a religious holiday. Any student who is absent because of religious or cultural observances shall have that absence excused and shall be provided the time and the opportunity to make up missed work, activities, and/or assessments. It is expected that students will meet with their teacher(s) in advance of a planned absence or at least upon the first day of their return to agree mutually upon a due date for missed work. In no case shall the timeframe to make up missed work be less than a week. Teachers will be responsible for providing students with missed materials relative to future assessment.

Similarly, families will be encouraged and invited to notify coaches, advisors, club leaders, etc. of student absences for religious or cultural observances. Students will not be penalized (e.g., held out of post absence participation) in their extra-curricular activities (e.g., sports, theater, clubs, etc.) for such absences.

Open and timely communication between students, families, and educators shall ensure that the opportunity to make up work does not place an unreasonable burden upon any of the parties.

REFS.                      IMDA policies of: Bedford, Concord-Carlisle, Westford, Belmont, Wayland

Adopted at School Committee Meeting of May 24, 2018  
Revised at School Committee Meeting of March 6, 2025

## **STUDENT ABSENCES AND EXCUSES**

Regular and punctual school attendance is essential for success in school. The Committee recognizes that parents/guardians of children attending our schools have special rights as well as responsibilities, one of which is to ensure that their children attend school regularly, in accordance with state law.

Therefore, students may be excused temporarily from school attendance for the following reasons: illness or quarantine; bereavement or serious illness in family; weather so inclement as to endanger the health of the child; and observance of major religious holidays.

A child may also be excused for other exceptional reasons with approval of the Superintendent/Principal or designee.

A student's understanding of the importance of day-to-day schoolwork is an important factor in the shaping of his character. Parents/guardians can help their children by not allowing them to miss school needlessly. Accordingly, parents/guardians will provide a written explanation for the absence or tardiness of a child. This will be required in advance for types of absences where advance notice is possible.

In instances of chronic or irregular absence reportedly due to illness, the school administration may request a physician's statement certifying such absences to be justified.

### **Student Absence Notification Program**

Each Associate Principal or designee will notify a student's parent/guardian within 3 days of the student's absence in the event the parent/guardian has not informed the school of the absence.

Each Associate Principal or designee shall make a reasonable effort to meet with any student, and that student's parent/guardian, who has missed five (5) or more unexcused school days (a school day shall be equal to two (2) or more class periods in the same day) in a school year. The meeting shall be to develop action steps to improve student attendance and shall be developed jointly by the Associate Principal or designee, the student, and the student's parent/guardian. The parties may seek input from other relevant school staff and/or officials from relevant public safety, health and human service, housing, and nonprofit agencies.

### **Dropout Prevention**

A student who has not graduated from high school and has been absent from school for ten (10) consecutive days of unexcused absence shall not be considered permanently removed from school unless the Associate Principal has sent notice to the student, and that student's parent/guardian. The notice shall be sent within five (5) days of the tenth consecutive day of absence and shall offer at least 2 dates and times within the next ten (10) days for an exit interview with the Superintendent or designee, the student, and the student's parent/guardian. The notice shall be in both English and the primary language of the home, if applicable. The notice shall include contact information for scheduling the exit interview and shall indicate the parties shall reach an agreement on the date/time of the interview within

the ten (10) day timeframe. The timeframe may be extended at the request of the parent/guardian and no extension shall exceed 14 days.

The Superintendent or designee may proceed with any interview without a parent/guardian present, provided the Superintendent has documented a good faith effort to include the parent/guardian.

The Superintendent or designee shall convene a team of school staff to participate in the exit interview and shall provide information to the student and, if applicable, the student's parent/guardian on the detrimental effects of early withdrawal from school and the alternative education programs and services available to the student.

SOURCE: MASC February 2019  
Adopted for LSSC Policy Manual: 12/21/21

LEGAL REFS.: M.G.L. [76:1](#); 76:1B; [76:16](#); 76:18; [76:20](#)

## IMDA - ACCOMMODATIONS FOR RELIGIOUS AND CULTURAL OBSERVANCES

The Sudbury Public School District is a religiously and culturally diverse community. In recognition of this diversity and in keeping with the districts' core values it is the intent of the school district to be aware of and to respect the religious and cultural observances of its students, families and staff.

Toward that end, any student who is absent due to a religious or cultural observance will, upon notification by the parent or guardian, have their absence excused. Families will be encouraged and invited to notify the school site of such plans at the start of the school year.

The District expects that classroom teachers will plan curriculum, major assignments, and assessments based on their awareness of their students' attendance plans recognizing the impact of significant absences on the educational process.

Any student who is absent because of religious or cultural observances shall be provided the time and the opportunity to make up missed work, activities, and / or assessments. It is expected that students will meet with their teacher(s) in advance of a planned absence or at least upon the first day of their return to agree mutually upon a due date for missed work. In no case shall the timeframe to make up missed work be less than the number of days missed plus one day. Teachers will be responsible for providing students with missed materials relative to future assessment.

Similarly, families will be encouraged and invited to notify coaches, advisors, club leaders, etc. of student absences for religious or cultural observances. Students will not be penalized (e.g. held out of post absence participation) in their extra-curricular activities (e.g. sports, theater, clubs, etc.) for such absences.

Open and timely communication between students, families and educators shall ensure that the opportunity to make up work does not place an unreasonable burden upon any of the parties.

Annually, the District will provide notification of this policy and a list of religious and cultural observances and their dates for the current academic year to all educators.

*Approved on December 8, 2022*

Students' Last Day of School - Assuming No Snow Days											
	Discussed at ACTF October 9					Discussed at ACTF October 24			ACTF Recommendation	New	New
						Rotating Model 1: All Holidays Rotate for Max of 3 Holidays	Rotating Model 2: 2 Static + 1 Rotating for Max of 3 Holidays			Rotating Model 3: 3 Static + 1 Rotating for Max of 4 Holidays	Rotating Model 4: 4 Static + 1 Rotating for Max of 4 Holidays
	Federal/State Holidays	6 Religious & Cultural Holidays	3 Prior Holidays (Rosh Hashanah, Yom Kippur, Good Friday)	3 Static Holidays (Rosh Hashanah/Yom Kippur, Eid Al- Fitr, Lunar New Year)	3 Rotating Holidays (Rosh Hashanah, Yom Kippur, Eid Al- Fitr, Lunar New Year, Diwali or Good Friday)	2 Static Holidays (Rosh Hashanah & Yom Kippur) + 1 Rotating (Eid Al- Fitr, Lunar New Year, Diwali or Good Friday)	4 Static Holidays (Rosh Hashanah, Yom Kippur, Eid Al-Fitr, Lunar New Year)	4 Static Holidays (Rosh Hashanah, Yom Kippur, Eid Al-Fitr/Eid al-Adha, Lunar New Year)		3 Static Holidays (Rosh Hashanah, Yom Kippur & Good Friday) + 1 Rotating (Diwali, Eid Al-Fitr or Lunar New Year)	4 Static Holidays (Rosh Hashanah, Yom Kippur, Eid Al- Fitr & Good Friday) + 1 Rotating (Lunar New Year or Diwali)
2024-2025		June 18									
2025-2026	June 10	June 17	June 15	June 12	June 15	June 15	June 15	June 15	June 15	June 16	June 16
2026-2027	June 15	June 21	June 17	June 17	June 21	June 21	June 21	June 17	June 17	June 21	June 21
2027-2028	June 12	June 15	June 13	June 14	June 15	June 15	June 15	June 13	June 14	June 15	June 15
2028-2029	June 11	June 18	June 13	June 14	June 14	June 14	June 14	June 14	June 14	June 14	June 15
2029-2030	June 11	June 17	June 13	June 13	June 13	June 13	June 14	June 14	June 14	June 14	June 14
2030-2031	June 10	June 16	June 12	June 13	June 13	June 13	June 13	June 13	June 13	June 13	June 16
2031-2032	June 9	June 16	June 11	June 14	June 14	June 14	June 14	June 14	June 14	June 14	June 15
2032-2033	June 13	June 21	June 15	June 16	June 16	June 16	June 16	June 16	June 16	June 16	June 17
2033-2034	June 12	June 15	June 14	June 14	June 15	June 15	June 15	June 14	June 14	June 15	June 15
2034-2035	June 11	June 15	June 13	June 14	June 14	June 14	June 14	June 14	June 14	June 14	June 15

Holidays that Fall on Weekends/Breaks/Mandated Holidays	
2024-2025	Yom Kippur (weekend)
2025-2026	Lunar New Year (during February break)
2026-2027	Rosh Hashanah, Diwali, Lunar New Year (all weekends)
2027-2028	Rosh Hashanah (weekend), Yom Kippur (Indigenous Peoples' Day), Eid Al-Fitr (weekend)
2028-2029	Yom Kippur (weekend)
2029-2030	Lunar New Year (weekend), Good Friday (during April break)
2030-2031	Rosh Hashanah, Diwali (both weekends)
2031-2032	Yom Kippur (weekend)
2032-2033	Rosh Hashanah (Labor Day)
2033-2034	Rosh Hashanah, Diwali, Lunar New Year (all weekends)
2034-2035	Yom Kippur (weekend), Diwali (Veterans' Day)

	Last day for teachers will be after Juneteenth
	Eid al-Fitr and Lunar New Year fall within week prior to February break

Last Student Day of School with No Snow Days	
2014-2015	June 12
2015-2016	June 17
2016-2017	June 15
2017-2018	June 13
2018-2019	June 13
2019-2020	June 15
2020-2021	June 17
2021-2022	June 16
2022-2023	June 15
2023-2024	June 12

## Detail on Rotating Models

Rotating Model 1: All Holidays Rotate for Max of 3 Holidays (Column F on Overview Tab)					
Year	School Closed in Observance of Holiday	Holiday on Weekend/Break/Other Mandated Holiday	Holiday with School in Session	Non-Mandated School Holidays	Rotation Considerations
2025-2026	Jewish Holiday, Good Friday, Eid al-Fitr	Lunar New Year	Jewish Holiday, Diwali	3	Only one Jewish holiday as No School day each school year
2026-2027	Yom Kippur, Good Friday, Eid al-Fitr	Rosh Hashanah, Diwali, Lunar New Year	None	3	N/A
2027-2028	Diwali, Lunar New Year, Good Friday	Rosh Hashanah, Yom Kippur, Eid al-Fitr	None	3	N/A
2028-2029	Rosh Hashanah, Good Friday, Eid al-Fitr	Yom Kippur	Lunar New Year, Diwali	3	LNy & Eid occur week prior to Feb. break, school in session for continuity
2029-2030	Jewish Holiday, Diwali, Eid al-Fitr	Lunar New Year, Good Friday	Jewish Holiday	3	Only one Jewish holiday as No School day each school year
2030-2031	Yom Kippur, Eid al-Fitr, Good Friday	Rosh Hashanah, Diwali	Lunar New Year	3	For School Committee Discussion
2031-2032	Rosh Hashanah, Good Friday, Eid al-Fitr	Yom Kippur	Lunar New Year, Diwali	3	For School Committee Discussion
2032-2033	Yom Kippur, Good Friday, Eid al-Fitr	Rosh Hashanah	Lunar New Year, Diwali	3	For School Committee Discussion
2033-2034	Yom Kippur, Eid al-Fitr, Good Friday	Rosh Hashanah, Diwali, Lunar New Year	None	3	N/A
2034-2035	Rosh Hashanah, Lunar New Year, Eid al-Fitr	Yom Kippur, Diwali	Good Friday	3	For School Committee Discussion

Diwali Off: 6/10 Years One Jewish Holiday: 10/10 Years Two Jewish Holidays: 8/10 Years Eid al-Fitr Off: 10/10 Years Good Friday Off: 9/10 Years Lunar New Year Off: 6/10 Years	Eid al-Fitr and Lunar New Year fall within week prior to February break
---	---

Rotating Model 2: 2 Static + 1 Rotating for Max of 3 Holidays (Column G on Overview Tab)					
Year	School Closed in Observance of Holiday	Holiday on Weekend/Break/Other Mandated Holiday	Holiday with School in Session	Non-Mandated School Holidays	Rotation Considerations
2025-2026	Rosh Hashanah, Yom Kippur, Eid al-Fitr	Lunar New Year	Good Friday, Diwali	3	RH and YK are on weekdays, so school is in session on Diwali for continuity
2026-2027	Yom Kippur, Eid al-Fitr, Good Friday	Rosh Hashanah, Diwali, Lunar New Year	None	3	N/A
2027-2028	Diwali, Lunar New Year, Good Friday	Rosh Hashanah, Yom Kippur, Eid al-Fitr	None	3	N/A
2028-2029	Rosh Hashanah, Diwali, Good Friday	Yom Kippur	Eid al-Fitr, Lunar New Year	3	LNy & Eid occur week prior to Feb. break, school in session for continuity
2029-2030	Rosh Hashanah, Yom Kippur, Eid al-Fitr	Lunar New Year, Good Friday	Diwali	3	RH and YK are on weekdays, so school is in session on Diwali for continuity
2030-2031	Yom Kippur, Eid al-Fitr, Lunar New Year	Rosh Hashanah, Diwali	Good Friday	3	For School Committee Discussion
2031-2032	Rosh Hashanah, Eid al-Fitr, Lunar New Year	Yom Kippur	Good Friday, Diwali	3	For School Committee Discussion
2032-2033	Yom Kippur, Eid al-Fitr, Good Friday	Rosh Hashanah	Lunar New Year, Diwali	3	For School Committee Discussion
2033-2034	Yom Kippur, Eid al-Fitr, Good Friday	Rosh Hashanah, Diwali, Lunar New Year	None	3	N/A
2034-2035	Rosh Hashanah, Eid al-Fitr, Good Friday	Yom Kippur, Diwali	Lunar New Year	3	For School Committee Discussion

Diwali Off: 6/10 Years Rosh Hashanah Off: 10/10 Years Yom Kippur Off: 10/10 Years Eid al-Fitr Off: 9/10 Years Good Friday Off: 7/10 Years Lunar New Year Off: 7/10 Years	Eid al-Fitr and Lunar New Year fall within week prior to February break
---	---

Rotating Model 3: 3 Static + 1 Rotating for Max of 4 Holidays (Column J on Overview Tab)					
Year	School Closed in Observance of Holiday	Holiday on Weekend/Break/Other Mandated Holiday	Holiday with School in Session	Non-Mandated School Holidays	Rotation Considerations
2025-2026	Rosh Hashanah, Yom Kippur, Eid al-Fitr, Good Friday	Lunar New Year	Diwali	4	RH and YK are on weekdays, so school is in session on Diwali for continuity
2026-2027	Yom Kippur, Eid al-Fitr, Good Friday	Rosh Hashanah, Diwali, Lunar New Year	None	3	N/A
2027-2028	Diwali, Lunar New Year, Good Friday	Rosh Hashanah, Yom Kippur, Eid al-Fitr	None	3	N/A
2028-2029	Rosh Hashanah, Diwali, Good Friday	Yom Kippur	Lunar New Year, Eid al-Fitr	3	LNy & Eid occur week prior to Feb. break, school in session for continuity
2029-2030	Rosh Hashanah, Yom Kippur, Eid al-Fitr	Lunar New Year, Good Friday	Diwali	3	RH and YK are on weekdays, so school is in session on Diwali for continuity
2030-2031	Yom Kippur, Eid al-Fitr, Good Friday	Rosh Hashanah, Diwali	Lunar New Year	3	School in Session on Diwali in prior year, so No School this year
2031-2032	Rosh Hashanah, Eid al-Fitr, Good Friday	Yom Kippur	Diwali, Lunar New Year	3	For School Committee Discussion
2032-2033	Yom Kippur, Eid al-Fitr, Good Friday	Rosh Hashanah	Diwali, Lunar New Year	3	For School Committee Discussion
2033-2034	Yom Kippur, Eid al-Fitr, Good Friday	Rosh Hashanah, Diwali, Lunar New Year	None	3	N/A
2034-2035	Rosh Hashanah, Good Friday, Lunar New Year	Yom Kippur, Diwali	Eid al-Fitr	3	Corrected on 12/5; extra rotating holiday included on previous version

Diwali Off: 6/10 Years Rosh Hashanah Off: 10/10 Years Yom Kippur Off: 10/10 Years Eid al-Fitr Off: 8/10 Years Good Friday Off: 10/10 Years Lunar New Year Off: 6/10 Years	Eid al-Fitr and Lunar New Year fall within week prior to February break
--	---

Rotating Model 4: 4 Static + 1 Rotating for Max of 4 Holidays (Column K in Overview Tab)					
Year	School Closed in Observance of Holiday	Holiday on Weekend/Break/Other Mandated Holiday	Holiday with School in Session	Non-Mandated School Holidays	Rotation Considerations
2025-2026	Rosh Hashanah, Yom Kippur, Eid al-Fitr, Good Friday	Lunar New Year	Diwali	4	RH and YK are on weekdays, so school is in session on Diwali for continuity
2026-2027	Yom Kippur, Eid al-Fitr, Good Friday	Rosh Hashanah, Diwali, Lunar New Year	None	3	N/A
2027-2028	Diwali, Lunar New Year, Good Friday	Rosh Hashanah, Yom Kippur, Eid al-Fitr	None	3	N/A
2028-2029	Rosh Hashanah, Diwali, Good Friday, Eid al-Fitr	Yom Kippur	Lunar New Year	4	LNy & Eid occur week prior to Feb. break, school in session for continuity
2029-2030	Rosh Hashanah, Yom Kippur, Eid al-Fitr	Lunar New Year, Good Friday	Diwali	3	RH & YK are on weekdays; so school in session on Diwali for continuity
2030-2031	Yom Kippur, Eid al-Fitr, Lunar New Year, Good Friday	Rosh Hashanah, Diwali	None	4	N/A
2031-2032	Rosh Hashanah, Eid al-Fitr, Lunar New Year, Good Friday	Yom Kippur	Diwali	4	For School Committee Discussion
2032-2033	Yom Kippur, Eid al-Fitr, Good Friday, Diwali	Rosh Hashanah	Lunar New Year	4	For School Committee Discussion
2033-2034	Yom Kippur, Eid al-Fitr, Good Friday	Rosh Hashanah, Diwali, Lunar New Year	None	3	N/A
2034-2035	Rosh Hashanah, Eid al-Fitr, Good Friday, Lunar New Year	Yom Kippur, Diwali	None	4	N/A

Diwali Off: 7/10 Years Rosh Hashanah Off: 10/10 Years Yom Kippur Off: 10/10 Years Eid al-Fitr Off: 10/10 Years Good Friday Off: 10/10 Years Lunar New Year Off: 8/10 Years	Eid al-Fitr and Lunar New Year fall within week prior to February break
---	---

# Calendar Model By Holiday

					Rotating Model 1: All Holidays Rotate for Max of 3 Holidays	Rotating Model 2: 2 Static + 1 Rotating for Max of 3 Holidays			Rotating Model 3: 3 Static + 1 Rotating for Max of 4 Holidays	Rotating Model 4: 4 Static + 1 Rotating for Max of 4 Holidays
	Federal/State Holidays	6 Religious & Cultural Holidays	3 Prior Holidays (Rosh Hashanah, Yom Kippur, Good Friday)	3 Static Holidays (Rosh Hashanah/Yom Kippur, Eid Al-Fitr, Lunar New Year)	3 Rotating Holidays (Rosh Hashanah, Yom Kippur, Eid Al-Fitr, Lunar New Year, Diwali or Good Friday)	2 Static Holidays (Rosh Hashanah & Yom Kippur) + 1 Rotating (Eid Al-Fitr, Lunar New Year, Diwali or Good Friday)	4 Static Holidays (Rosh Hashanah, Yom Kippur, Eid Al-Fitr, Lunar New Year)	4 Static Holidays (Rosh Hashanah, Yom Kippur, Eid Al-Fitr/Eid al-Adha, Lunar New Year)	3 Static Holidays (Rosh Hashanah, Yom Kippur & Good Friday) + 1 Rotating (Diwali, Eid Al- Fitr or Lunar New Year)	4 Static Holidays (Rosh Hashanah, Yom Kippur, Eid Al-Fitr & Good Friday) + 1 Rotating (Lunar New Year or Dwali)
Rosh Hashanah	School in Session	No School Day	No School Day	No School Day	Rotates (No School 10/10 years)	No School Day	No School Day	No School Day	No School Day	No School Day
Yom Kippur	School in Session	No School Day	No School Day	School in Session, unless Rosh Hashanah falls on weekend or mandated holiday	Rotates (No School 8/10 years)	No School Day	No School Day	No School Day	No School Day	No School Day
Diwali	School in Session	No School Day	School in Session	School in Session	Rotates (No School 6/10 years)	Rotates (No School 6/10 years)	School in Session	School in Session	Rotates (No School 6/10 years)	Rotates (No School 7/10 years)
Lunar New Year	School in Session	No School Day	School in Session	No School Day	Rotates (No School 6/10 years)	Rotates (No School 7/10 years)	No School Day	No School Day	Rotates (No School 6/10 years)	Rotates (No School 8/10 years)
Eid al-Fitr	School in Session	No School Day	School in Session	No School Day	Rotates (No School 10/10 years)	Rotates (No School 9/10 years)	No School Day	No School Day; if on weekend or mandated holiday, replaced with Eid al-Adha	Rotates (No School 9/10 years)	No School Day
Good Friday	School in Session	No School Day	No School Day	School in Session	Rotates (No School 9/10 years)	Rotates (No School 7/10 years)	School in Session	School in Session	No School Day	No School Day

# ACTF Considerations by Model

				<b>Rotating Model 1: All Holidays Rotate for Max of 3 Holidays</b>	<b>Rotating Model 2: 2 Static + 1 Rotating for Max of 3 Holidays</b>			<b>Rotating Model 3: 3 Static + 1 Rotating for Max of 4 Holidays</b>	<b>Rotating Model 4: 4 Static + 1 Rotating for Max of 4 Holidays</b>
Federal/State Holidays	6 Religious & Cultural Holidays	3 Prior Holidays (Rosh Hashanah, Yom Kippur, Good Friday)	3 Static Holidays (Rosh Hashanah/Yom Kippur, Eid Al-Fitr, Lunar New Year)	3 Rotating Holidays (Rosh Hashanah, Yom Kippur, Eid Al-Fitr, Lunar New Year, Diwali or Good Friday)	2 Static Holidays (Rosh Hashanah & Yom Kippur) + 1 Rotating (Eid Al-Fitr, Lunar New Year, Diwali or Good Friday)	4 Static Holidays (Rosh Hashanah, Yom Kippur, Eid Al-Fitr, Lunar New Year)	4 Static Holidays (Rosh Hashanah, Yom Kippur, Eid Al-Fitr/Eid al-Adha, Lunar New Year)	3 Static Holidays (Rosh Hashanah, Yom Kippur & Good Friday) + 1 Rotating (Diyali, Eid Al-Fitr or Lunar New Year)	4 Static Holidays (Rosh Hashanah, Yom Kippur, Eid Al-Fitr & Good Friday) + 1 Rotating (Lunar New Year or Diwali)
Removed from Consideration Due To:	Removed from Consideration Due To:	Removed from Consideration Due To:	Removed from Consideration Due To:	Removed from Consideration Due To:	Favored by ACTF Due To:	Favored by ACTF Due To:	Favored by ACTF Due To:	Not Discussed by ACTF	Not Discussed by ACTF
Easter Sunday, Christmas Day and Christmas Eve will never be school days making Federal/State model seem less balanced	Preference to strike a balance between community members asking for no religious and cultural holidays and those citing the extreme importance of observing certain religious holidays with a No School day	Growing population of community members observing Lunar New Year	Desire for both Rosh Hashanah and Yom Kippur to remain as No School days given easement agreement, long-term partnership with TBE, acknowledgement of current climate and consensus around need of no school to observe the holiday	Desire for both Rosh Hashanah and Yom Kippur to remain as No School days given easement agreement, long-term partnership with TBE, acknowledgement of current climate and consensus around need of no school to observe the holiday	Desire for both Rosh Hashanah and Yom Kippur to remain as No School days given easement agreement, long-term partnership with TBE, acknowledgement of current climate and consensus around need of no school to observe the holiday	Desire for both Rosh Hashanah and Yom Kippur to remain as No School days given easement agreement, long-term partnership with TBE, acknowledgement of current climate and consensus around need of no school to observe the holiday	Desire for both Rosh Hashanah and Yom Kippur to remain as No School days given easement agreement, long-term partnership with TBE, acknowledgement of current climate and consensus around need of no school to observe the holiday		
Desire for both Rosh Hashanah and Yom Kippur to remain as No School days given easement agreement, long-term partnership with TBE, acknowledgement of current climate and consensus around need of no school to observe the holiday	Desire to end school before Juneteenth	Growing population observing Eid al-Fitr, current climate, and consensus around need for no school to observe the holiday			Growing population of community members observing Lunar New Year	Growing population of community members observing Lunar New Year	Growing population of community members observing Lunar New Year		
Staffing Concerns on Good Friday	More than 3 non-mandated holidays in a year increases continuity and childcare concerns				Growing population observing Eid al-Fitr, current climate, and consensus around need for no school to observe the holiday	Growing population observing Eid al-Fitr, current climate, and consensus around need for no school to observe the holiday	Growing population observing Eid al-Fitr, current climate, and consensus around need for no school to observe the holiday		
	<i>Note: Some ACTF members favored this model due to sense of belonging reported by students, staff and families</i>				Less consensus around need for no school holiday for Good Friday, esp. among parents/caregivers, teachers/staff	Less consensus around need for no school holiday for Good Friday, esp. among parents/caregivers, teachers/staff	Less consensus around need for no school holiday for Good Friday, esp. among parents/caregivers, teachers/staff		
						Smaller population and less consensus on need for Diwali as no school holiday	Smaller population and less consensus on need for Diwali as no school holiday		

Lincoln Public Schools  
Lincoln, Massachusetts

SCHOOL COMMITTEE TRI-DISTRICT MEETING OF APRIL 9, 2025

AGENDA ITEM:

7.0 Action Items:

- Potential vote to appoint members to a Tri-District Calendar Review Subcommittee
- Potential vote on a charge for a Tri-District Calendar Review Subcommittee

Supporting Documents: ☐ Enclosed ☒ N/A ☐ Forthcoming

☒ Potential VOTE:

- To appoint members to a Tri-District Calendar Review Subcommittee
  - On a charge for the Tri-District Calendar Review Subcommittee
-