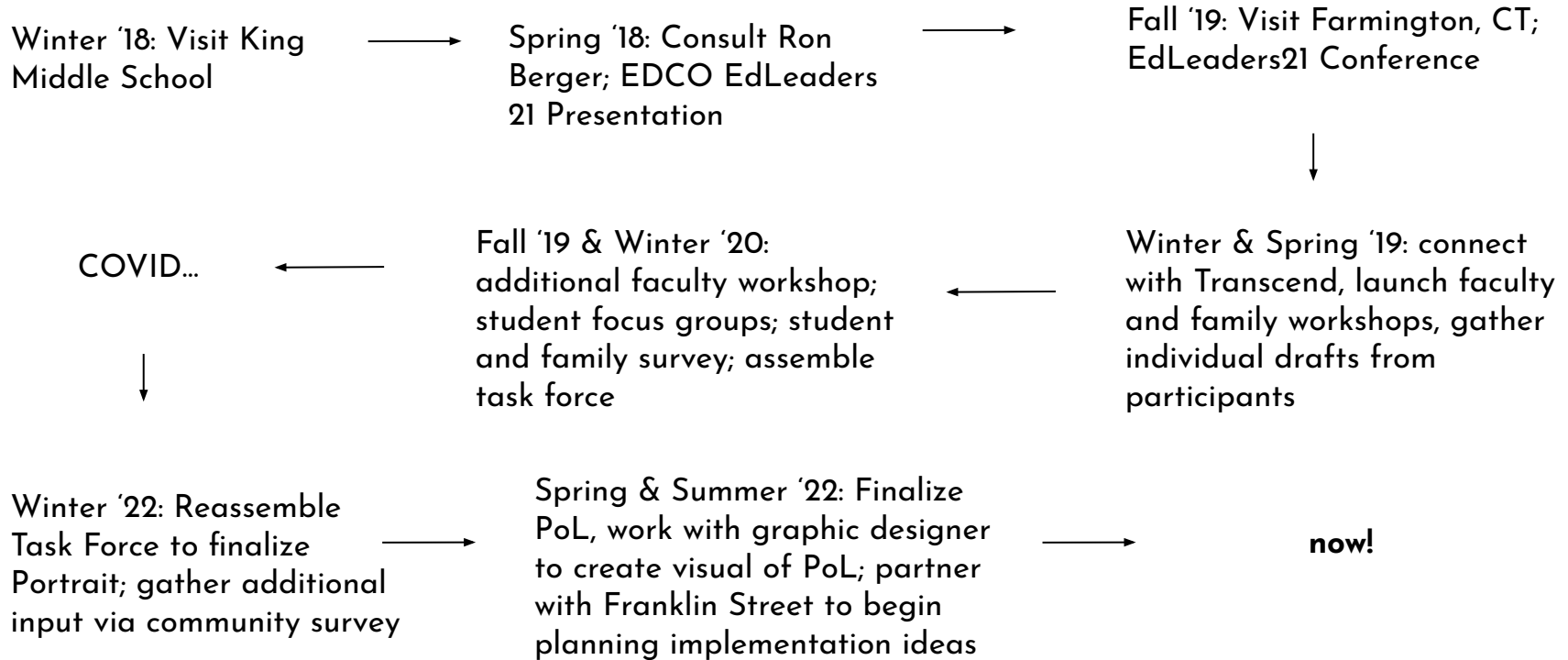


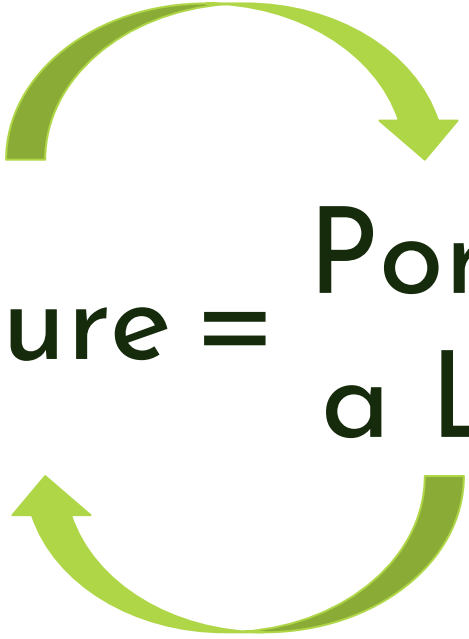
Lincoln Public Schools Portrait of a Learner

School Committee 9/8/22

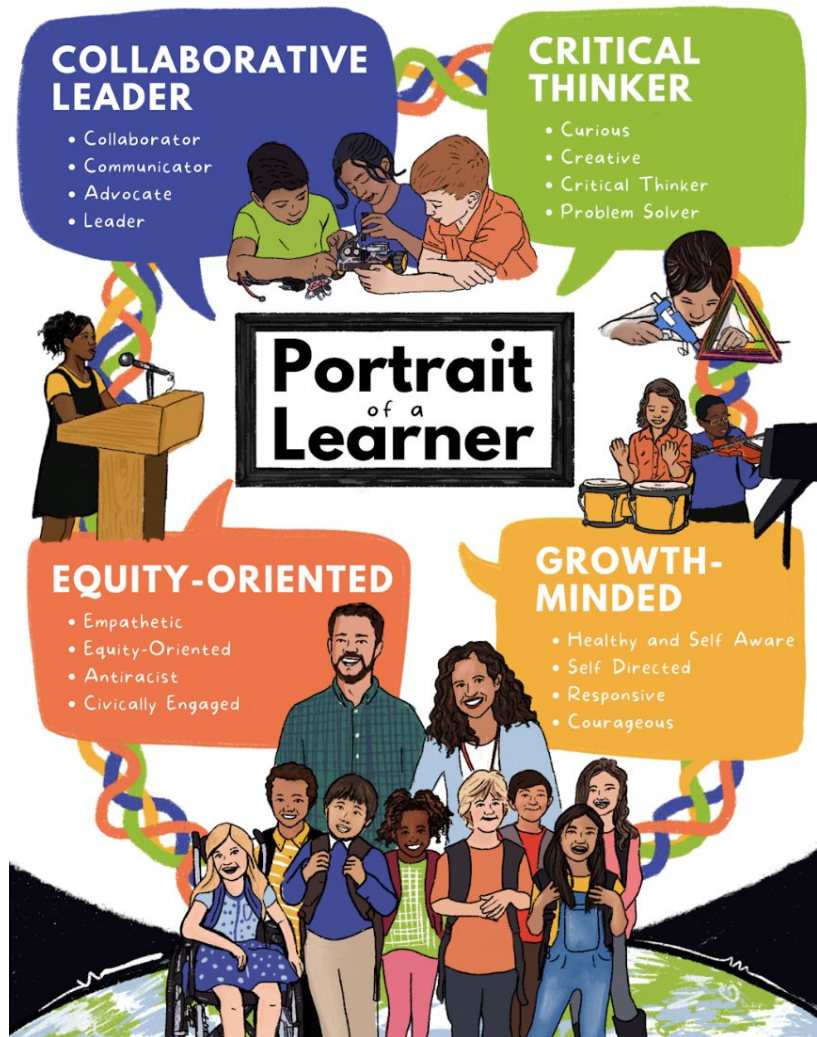


Portrait of a Learner Process



Two green curved arrows forming a circle around the text. The top arrow points from left to right, and the bottom arrow points from right to left.

Culture = Portrait of
a Learner



AIDE
+ SEL
+ Deeper Learning

Lincoln Portrait of a Learner

Portrait of a Learner COLLABORATIVE LEADER

COLLABORATOR

COMMUNICATOR

I partner with others to gain understanding, complete tasks, and reach common goals

I clearly articulate thoughts and ideas in a variety of forms and for different purposes

I engage productively in conversations

I actively listen

I seek, contribute, and respond to feedback and diverse viewpoints to achieve collective outcomes and help everyone grow

I work with others to constructively resolve conflict



ADVOCATE

LEADER

I seek to understand my own needs and the needs of those around me

I recognize how my personal decisions and actions have an impact beyond myself

I act with honesty and integrity, modeling by example

I speak up/stand up for myself and for others

I acknowledge my mistakes and commit to grow and do better, owning my contributions when others are harmed

I help others reach their full potential by sharing leadership

I act as an environmental and cultural steward, taking action to make the world a better place

LINCOLN PUBLIC SCHOOLS

Portrait of a Learner CRITICAL THINKER

CURIOUS

CREATIVE

I ask lots of questions and am eager to explore and construct answers from what I learn

I use my brain, hands, and tools to make objects of beauty and/or worth in the world

I am open to new ideas and perspectives

I seek to understand how the world works and how people interact



I construct new, original ideas and interpretations

CRITICAL THINKER

PROBLEM SOLVER

I critically consume and produce information, recognizing perceptions, biases, and assumptions

I apply my content knowledge and academic skills to solve problems and achieve my goals

I think flexibly and seek multiple possibilities

I improve the quality of my thinking by analyzing and assessing evidence and refining ideas

I identify, evaluate, and imagine new approaches, and prioritize solutions to difficult or complex situations

LINCOLN PUBLIC SCHOOLS

Portrait of a Learner EQUITY-ORIENTED

EMPATHETIC

EQUITY-ORIENTED

I practice awareness, sensitivity, concern, and respect to connect with others' feelings, opinions, experiences, and culture

I recognize inequities and take action against them, both on my own and with others

I work to understand other people's point of view

I intentionally work to be inclusive and remove barriers that exist



I show awareness that the histories and narratives tend to come from dominant perspectives and I center the voices of underrepresented groups

ANTIRACIST

CIVICALLY ENGAGED

I understand how my identity, culture, and world views impact others

I work to understand how history contributes to the inequities and current realities for people of color

I spot, speak out, and take action to uproot and disrupt explicit, implicit, and systemic racism

I engage in local and global efforts to contribute to my communities and the world

I understand, communicate with, and effectively interact with people across lines of difference

LINCOLN PUBLIC SCHOOLS

Portrait of a Learner GROWTH-MINDED

HEALTHY & SELF AWARE

SELF DIRECTED

I make choices to keep myself healthy: physically, mentally, emotionally, and socially

I am independent and self-directed

I am self-reflective and know myself and my needs



I believe in myself and my future

I can set a goal for myself and evaluate my progress along the way. I revise my goals when I need more time and/or support

RESPONSIVE

COURAGEOUS

I use feedback, praise, and criticism to take action and grow

I embrace that mistakes and setbacks are a critical part of growth and learning

I am flexible and resourceful to overcome obstacles and uncover alternate strategies to achieve goals

I am willing to try, even when I know I might fail

I take a risk, even if it makes me nervous or uncomfortable

LINCOLN PUBLIC SCHOOLS

How do I grow into our portrait of a learner?
How do I nurture those around me to do the same?

COLLABORATIVE LEADER

CRITICAL THINKER

EQUITY-ORIENTED

GROWTH-MINDED

