



# METCO REPORT

## 2021-2022



December 16, 2021



# Land Acknowledgement

---



*I respectfully acknowledge that my work occurs  
on unceded traditional territories of the  
Pawtucket and Massa-adchu-es-et nations*

# What to Expect

---

- Anchors
- Goals
- Highlights
- Enrollment
- Admissions Process
- Updates from METCO HQ & Lincoln METCO
- Enrollment request for 22-23

# Lincoln METCO Anchors

---

## Anchors:

- Deep connections
- Equity (dismantling inequitable practices and policies)
- Student Success



## anchors

They remind us that ~  
when life's winds blow  
and seas get stormy ~  
we all do best when tied to  
something solid and true.

# Goals → District Map & AIDE Action Plan

Continue to foster deep connections with students in order to learn their academic and social/emotional needs and in turn, support faculty/staff in responding to students' needs in a culturally competent manner

## Strengthening Relationships

Strengthen the program's processes, strategies, and accountability around the transitioning of Boston students/families in Lincoln

## Accountability & Support

Enhance caregiver engagement and understanding of the importance of their role in supporting their child(ren)'s transition to school and ongoing success (academically, socially, emotionally)

## Sense of Belonging: Family Connections

Work collaboratively with administration, faculty, and staff to develop and implement consistent data tracking methods that support and monitor areas of growth and rate of academic progress (including engagement, self advocacy, etc) for our students of color

## AIDE & Deeper Learning

# Goals

Continue to foster deep connections with students in order to learn their academic and social/emotional needs and in turn, support faculty/staff in responding to students' needs in a culturally competent manner

- Action Steps:
  - Lunch Bunches
  - Observations (classroom and during interventions)
  - Attend IST/SST/Team meetings and consult with staff
  - Student/family check-ins
  - Mentoring
- Outcome:
  - Students' social emotional needs are met with cultural competence and care, creating trusted identity safe-spaces where they are more receptive to daily learning and achieve academic success



# Goals

---



Strengthen the program's processes, strategies, and accountability around the transitioning of Boston students/families in Lincoln

- Action Steps:
  - Assess procedures and dismantle inequitable practices
  - Hire K-4 Academic Tutor
  - Continued training around the METCO Program
  - Survey families/track withdrawal reasons
- Outcome:
  - Students and families will feel connected, report an increased sense of belonging and stay

# Goals

Enhance caregivers' understanding of the importance of their role in supporting their child(ren)'s transition to LPS and their ongoing success (academically, socially, emotionally)

- Action Steps:
  - Parent meetings: Create opportunities for caregivers to connect and share experiences
  - Continue to partner with METCO Coordinating Committee
    - Partner Families (aka host families)
  - Offer workshops in response to listening sessions and that assist all families with successful navigation of school policies/procedures
- Outcome:
  - Students will feel supported and students and caregivers will be more engaged





# Goals

---



Work collaboratively with administration, faculty, and staff to develop and implement consistent data tracking methods that support and monitor areas of growth and rate of academic progress (including engagement, self advocacy, etc) for our students of color so that the specific needs are met in a timely manner

- Action Steps:
  - Participate in the collection and analyzing of data on student progress
    - Student observations
  - Provide feedback and support around the development and usage of culturally appropriate interventions
  - Continue offering ACLC 1:1 academic tutoring support
- Outcome:
  - Students academic progress is prioritized and they are given equitable opportunities and intervention support, show growth at a progressive rate, and feel successful in their academic journey

# Highlights

---



- Glows
  - Increased direct communication between faculty and families
  - Increased supports for students (academic, social, therapeutic)
  - METCO HQ and school collaboration on student referrals
  - AIDE action planning
  - Collaboration with LMPB
- Grows
  - Continue educating families, staff and students on the Lincoln METCO program and METCO origins
  - Parent engagement
  - Student/caregiver goal setting and outcome tracking
  - Revision and development of policy with an equitable lens
  - Transportation (tracking, bus routes, etc)

# Highlights

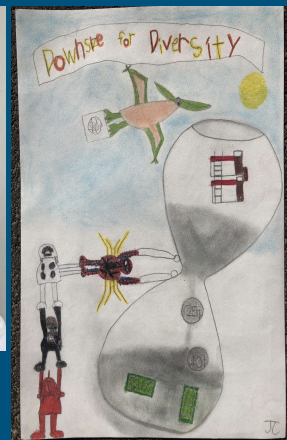
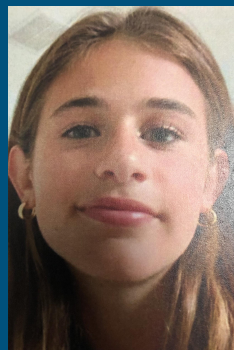
## Building Community

### Caregivers:

- Partner Family planning w/MCC and LMPB

### Students:

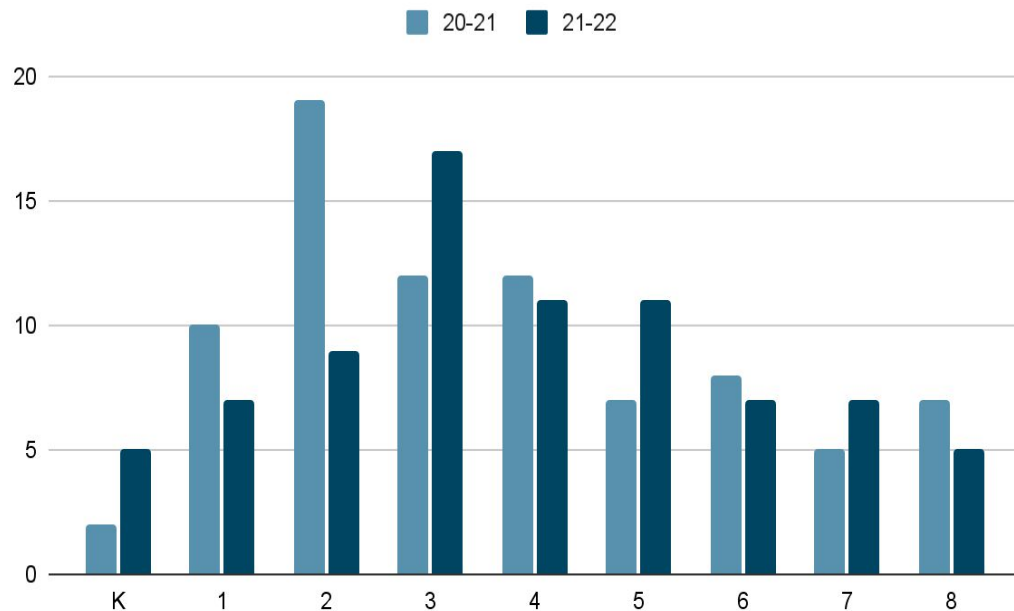
- Yoga for the Culture
- AIDE in ACTION
  - Downsize for Diversity Book
  - Student presentations at Diversity Dialogues
- LEAP
- Lunch bunches



# Enrollment

- Current Enrollment = 78\* students
  - \*Enrollment as of 10/1/21 = 79
  - K-4 = 48 students
  - 5-8 = 30 students
- Noticings
  - Slight bell shaped curve
    - Attrition in higher grades
    - Smaller incoming classes

Lincoln METCO Enrollment for 2020-2021 & 2021-2022



Civil rights coalition will be allowed to argue in  
exam school admissions lawsuit

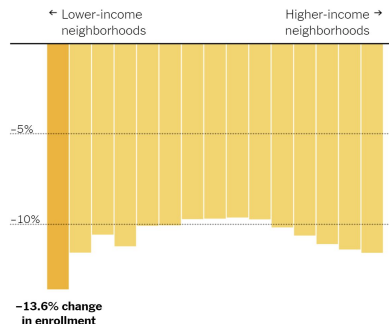
Civil rights groups urge state to change  
'discriminatory' vocational school admissions  
policies to lottery

The New York Times

## The Kindergarten Exodus

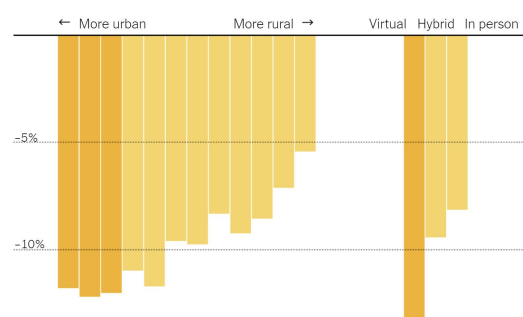
As the pandemic took hold, more than 1 million children did not enroll in local schools. Many of them were the most vulnerable: 5-year-olds in low-income neighborhoods.

Kindergarten losses were steepest in schools in the poorest neighborhoods



There were larger kindergarten enrollment declines in cities ...

... and in schools that operated virtually last fall.



CommonWealth  
NONPROFIT JOURNAL OF POLITICS, IDEAS & CIVIC LIFE

As students leave district schools, charters and vocational schools see growth

Boston Herald

Boston Public Schools sees enrollment drop heavily, mostly among younger, minority students

BOSTON INDICATORS  
MEASURING WHAT WE VALUE

Public school enrollment down statewide and in Boston during pandemic.

# Current Landscape

# Why are cohorts declining in size?

**Boston families have more options:**

- Parochial schools
- Private schools
- Pilot schools
- Exam schools
- Four charters schools built new buildings in the last three years



**COMPLETE  
APPLICATION**

**REFERRAL  
TO DISTRICT**

**DISTRICT  
SELECTION**

**ENROLL IN  
DISTRICT**

- ✓ Request files/Screen files for completion
- ✓ Virtual Mandatory Prospective Family Information Session (March)
- ✓ Interviews
- ✓ Admission Team Debrief
- ✓ School Committee Approval of seats\*
- ✓ Superintendent Approval
- ✓ Make offer to families
- ✓ Finalize decisions updated in SchoolMint
- ✓ Welcome/Building Connections (Summer 2022)

### **Lincoln METCO Enrollment Experience**

- New 20-21 students
  - Offered 10 seats
  - 6 students remaining in cohort
  - Why?
    - 1 decline after entire admissions process (distance)
    - 2 moved from Boston, 1 withdrawal-not a good fit for family
- New 21-22 students
  - 10 students

# **Application & Enrollment Process**



# Updates

---



## **METCO HQ:**

- Remain competitive with other school options in the Boston area by aligning our application process
- Lessen the amount of paperwork required to apply
- Alignment of admission decision timelines so that parents can make informed decisions in a timely manner

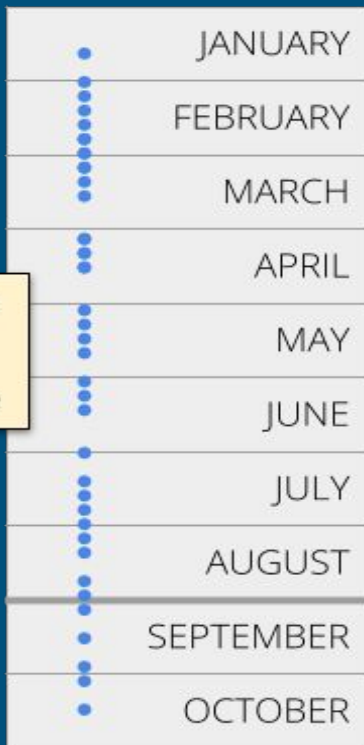
## **Lincoln METCO:**

- Staff restructuring
- Continue to prioritize K-2 and sibling files, with a plan to include upper grade students
- Align our application process as requested and make admission offers between the end of March and mid April



# Updates

## CURRENT SCHEDULE OF OFFERS

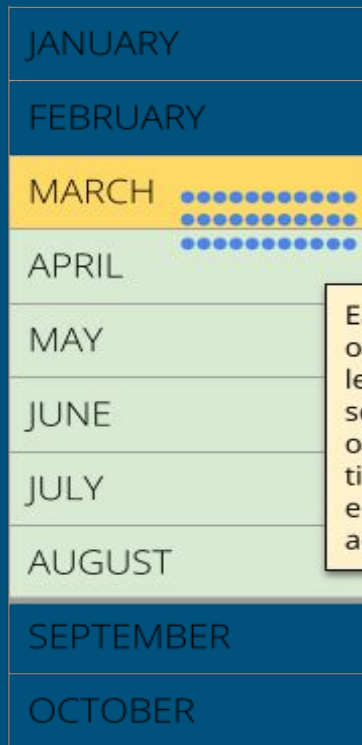


At least 33 separate offer dates, each with its own acceptance timeline

◀ Charter and exam school offers ▶

• = offer from a METCO district

## PROPOSED SCHEDULE OF OFFERS



Earlier and aligned offer schedule leaves more time for second round offers, and more time for orientation, engagement, and academic support

# Request for Approval of Enrollment

---

- Current Enrollment = 78
- 5 graduates
- Accept 18 new students to reach goal of 91 max enrollment
- Update on enrollment at future meeting

Questions

